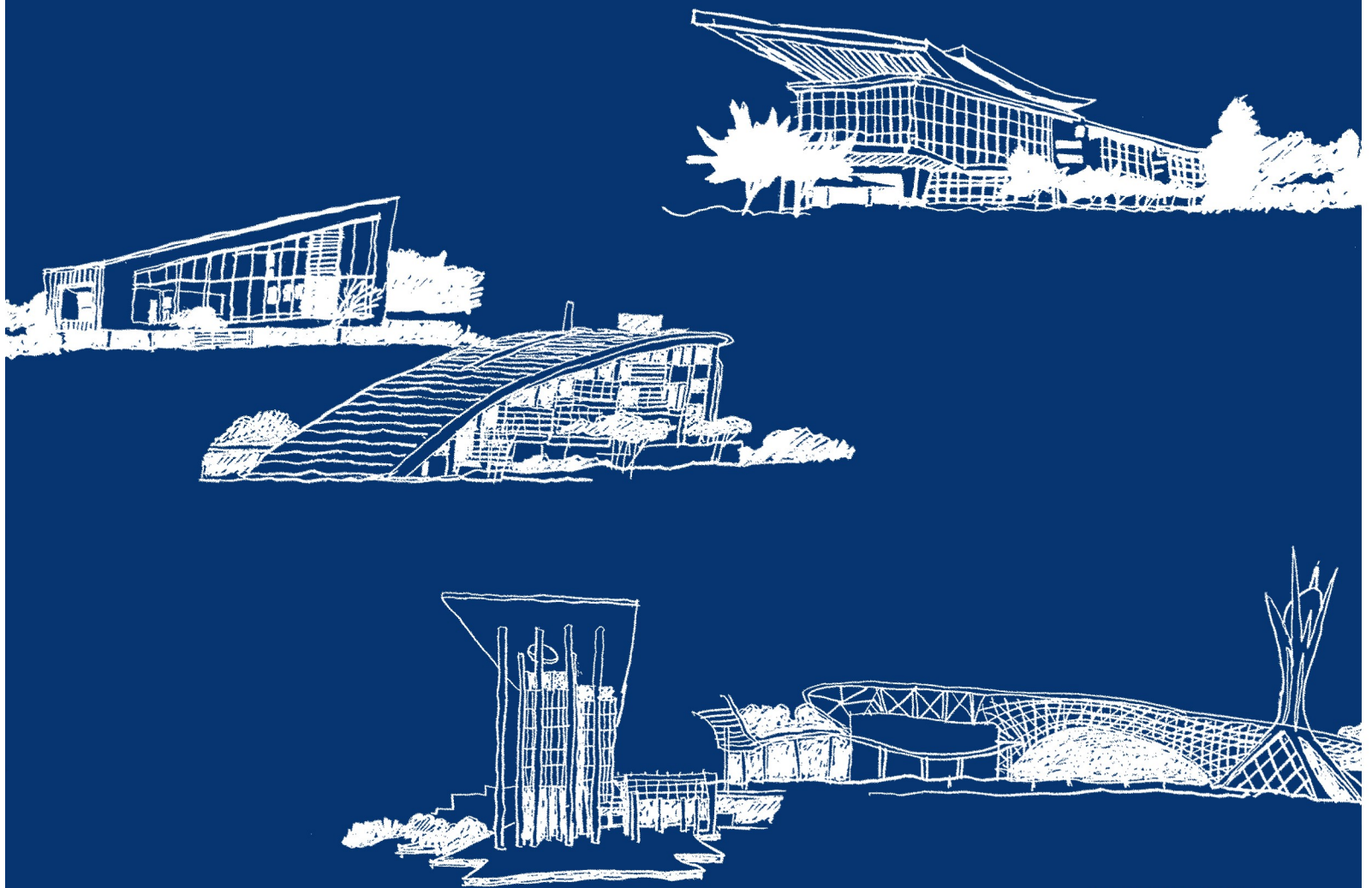


RECENT MALAYSIAN ARCHITECTURE



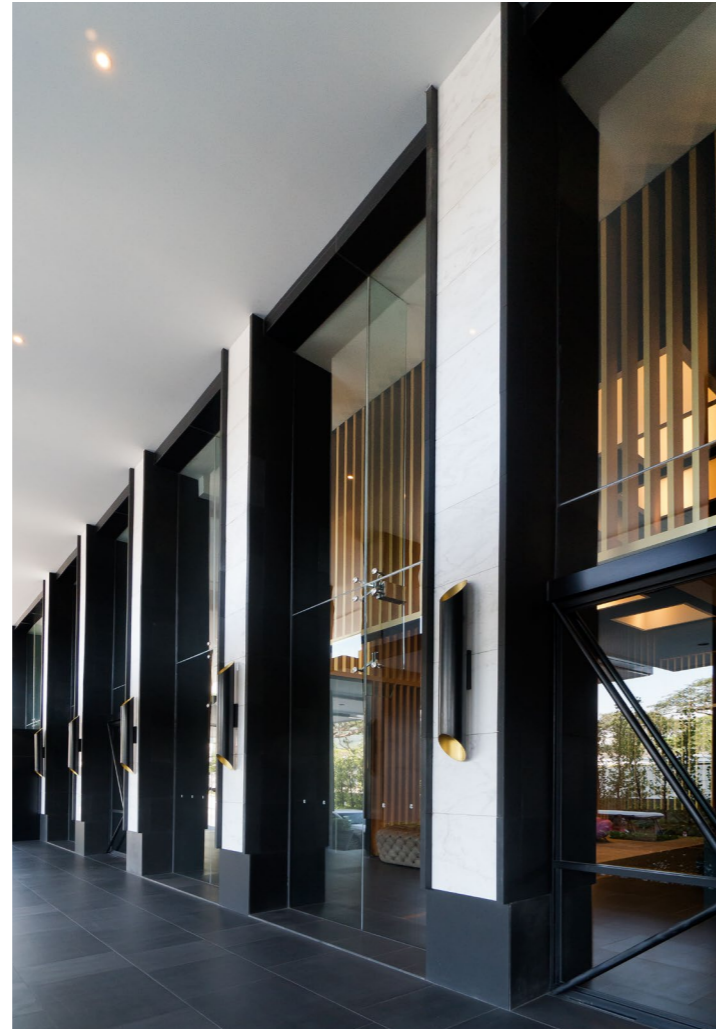
VOL. 2

LEE CHOR WAH
AW SIEW BEE
DR TAN LOKE MUN

Photography By
LIN HO

G HOTEL KELAWAI

ARCHITECT T.Y. AU (IN COLLABORATION WITH K2LD ARCHITECTS)

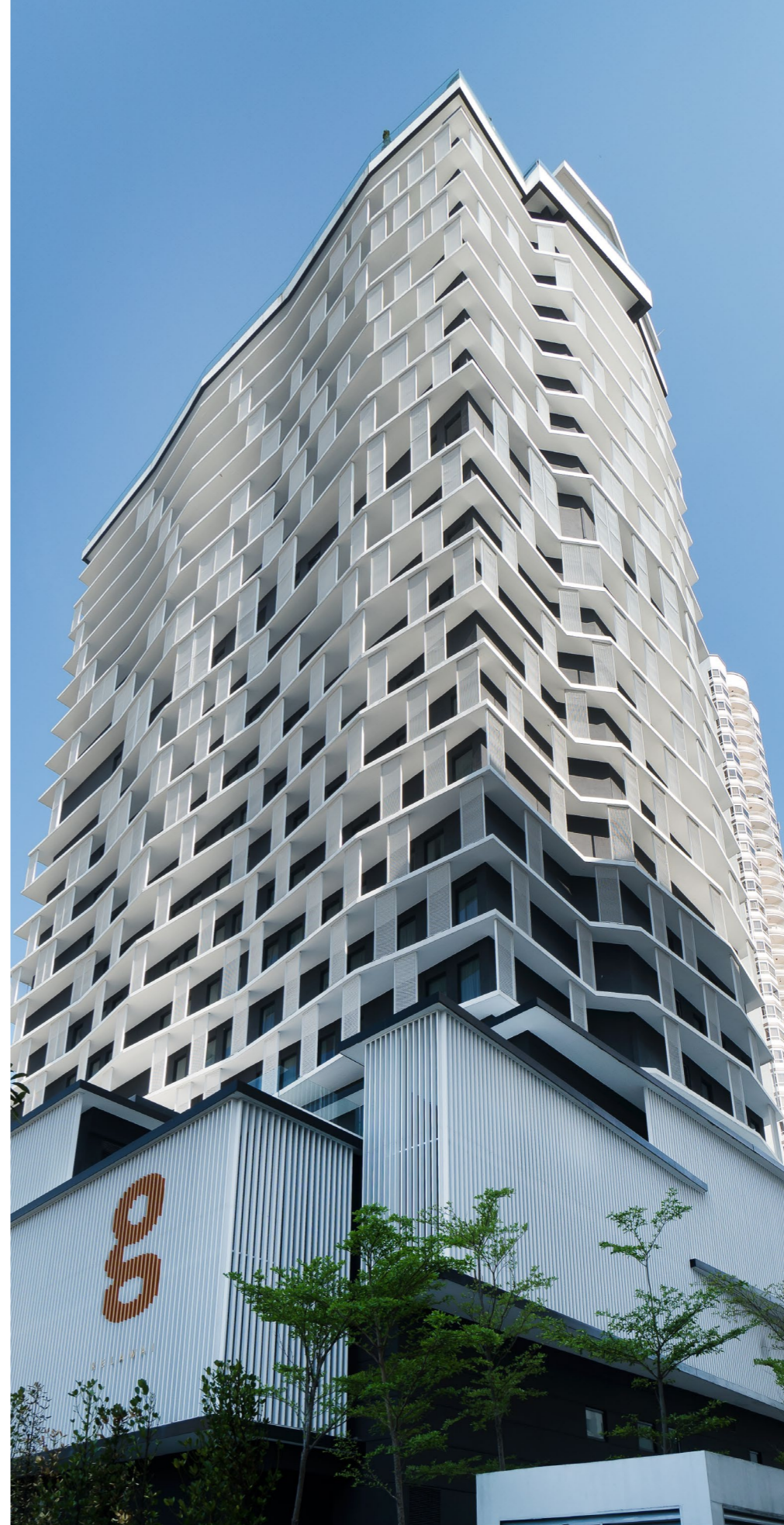


G Hotel Kelawai, with its striking white-against-black facade thrusts into a background of palatial high-rises along Kelawai Road, just behind Gurney Drive, Penang, sits on a curious, if strategic site surrounded by an Indian temple, an upscale condominium, and two prominent malls, Gurney Plaza and Gurney Paragon. In the absence of a coveted ocean view, G Hotel Kelawai took it upon itself to become its own attraction through a dynamic architectural expression. The executive business hotel sports a lattice of white aluminium mesh screens and deep concrete overhangs that are set ablaze with a pulsating colourful light display at night. Windows are relegated to interstitial elements in the dark facades, allowing for a low window-to-wall ratio. Combined, these three elements form an eye-catching passive environmental design solution to address excessive heat gain and daylighting.

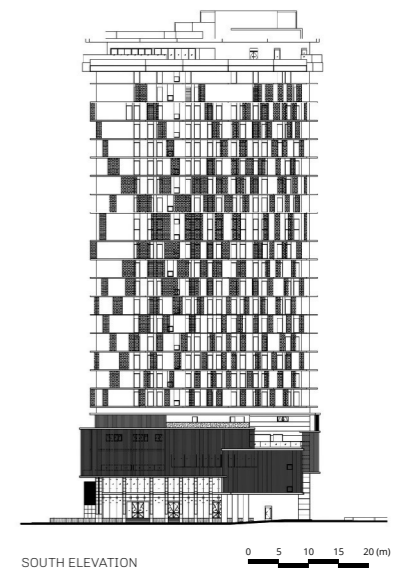
The hotel sits on a podium comprising two interlocked boxes of fine white vertical aluminium strips, sharing space with public gathering and entertainment areas on the podium rooftop. Below, the hotel invites foot traffic from multiple entry points through a highly permeable street level to reveal a luxurious triple-volume interior containing a suspended golden cage, grand staircase, lobby, lounge bar, and reception. Overall, G Hotel Kelawai manages to define an alternative expression to the typical modern skyscraper without resorting to excessive use of glass.

Left: Lattices and louvres enable spaces to be daylighted

Right: The arrival entrances



Left: The articulated sculptured white skin in contrast with its dark background over a staggered podium of vertical lattices



SOUTH ELEVATION