

SINGAPORE \$8 MALAYSIA RM18 HONGKONG HKD90 AUSTRALIA AU\$14.95 OTHERS US\$12

# da

design and architecture  
www.designandarchitecture.com

THE CAPERS @ SENTUL EAST  
NTU LEARNING HUB  
ÓBIDOS TECHNOLOGICAL PARK  
INDIAN HERITAGE CENTRE

dwell

House of Memories  
L45 in Bangsar, KL  
House of Connecting Voids

profile

Luk Studio, Shanghai

interview

David Adjaye on the OUE Artling Pavilion

ISSUE 085 | 2015 | S\$8



# DEFINED BY *FLUX*

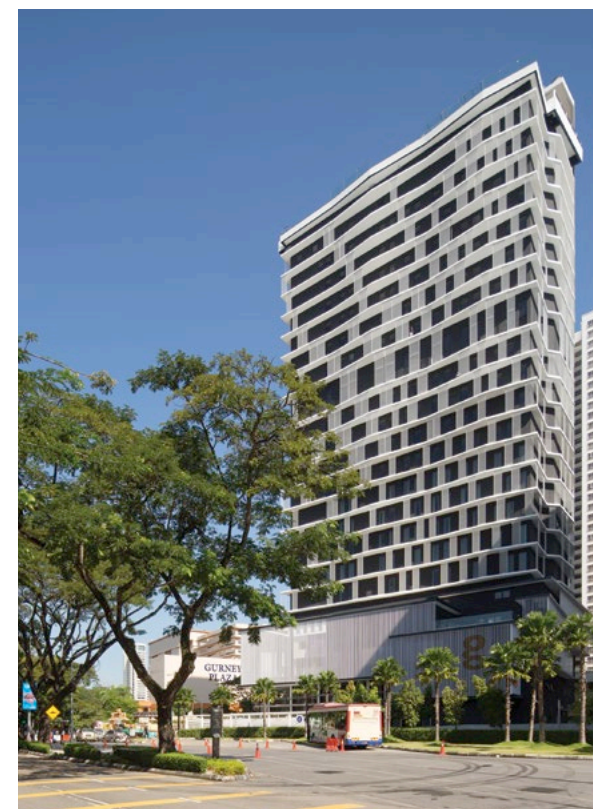
BY T Y AU | IMAGES COURTESY K2LD ARCHITECTS

The all-new hotel G @ Kelawei, like its predecessor the G @ Gurney, raises the bar for hospitality projects in Penang and perhaps foretells of a new approach towards architecture here in years to come.

Although he may loathe to admit it, the island of Penang was a significant platform for Ko Shiou Hee, principal and founder of K2LD Architects, to elevate his architecture and interior design career. His first public project, the G Hotel in Penang, renamed as G @ Gurney, was completed in 2007 and provided him with a canvas to explore his philosophy of sense and sensibility in the use of material, colour and lighting. Although K2LD was mainly responsible for the interior re-planning and design, the project pushed and raised the design envelope and expectations in Penang, winning international accolades and awards. A sister hotel, G @ Kelawei, situated just a stone throw's away, has recently been completed. In this latter project, K2LD was totally responsible for both the architecture and interiors, collaborating with local Penang firm, Architect T Y Au.

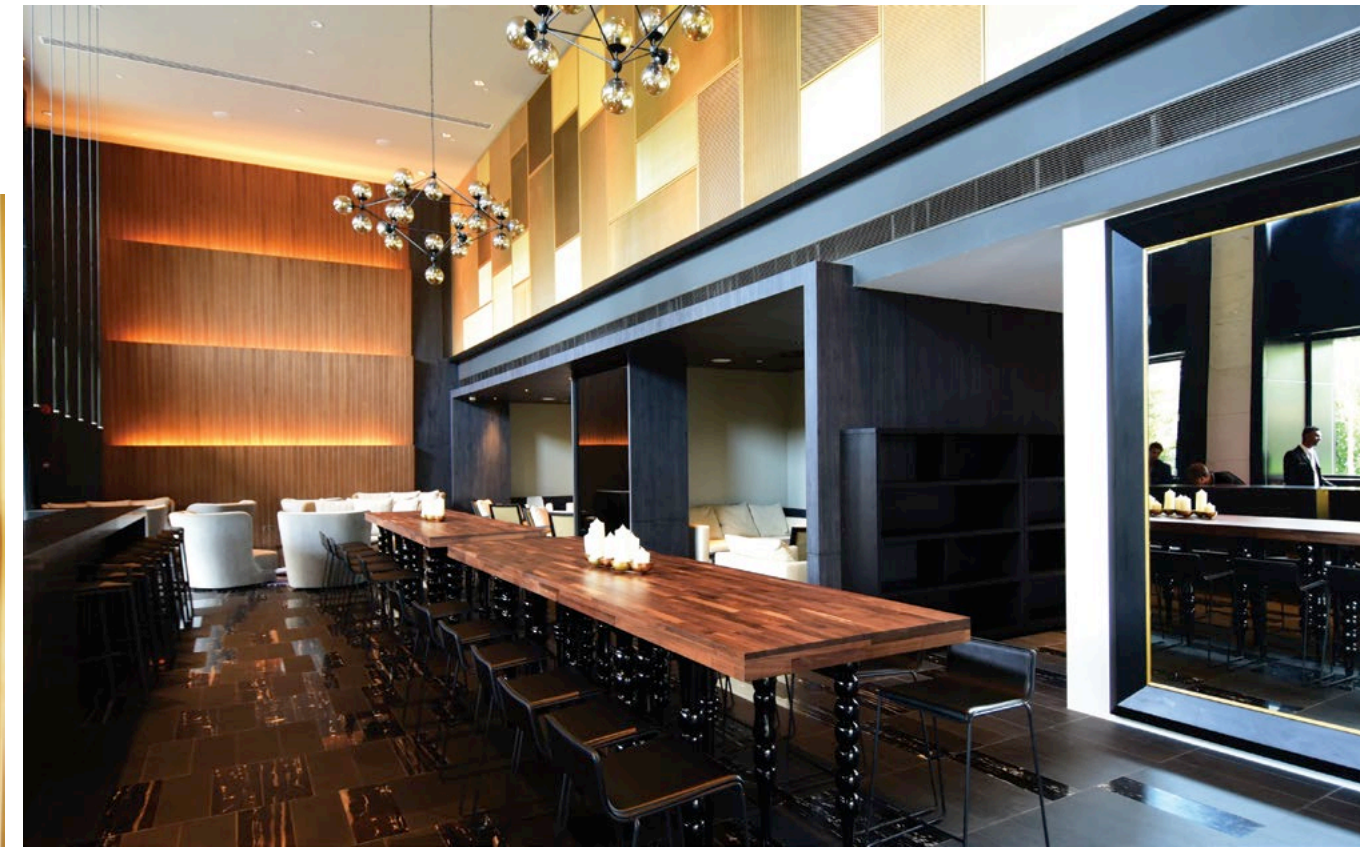
G @ Kelawei is conveniently situated next to Gurney Plaza and Paragon Mall, Penang's main shopping attractions even as the building is dwarfed by its neighbours due to the floor area ratio restrictions. Its wave-like ledges, placement of sun screens and vertical trellises, as well as choice of colour in starkly contrasting black and white, make the building stand out. The building consists of a four-storey podium, a 20-storey tower block and a two-storey basement carpark. The public areas at the podium are limited to the ground, first and second floors.

The F&B outlets are the all-day dining cafe Spoon which has an alfresco area, the 2PM lounge on the ground floor also with alfresco seating, and Gravity skybar on the 23rd floor where the infinity pool is. Spoon is strategically located at the second floor where diners get picturesque views out over the tops of Angsana trees along the streets and to the hills beyond. The interior takes inspiration from Penang's colonial past and rich Peranakan influence, simplified and abstracted with a modern sensibility.



While Ko's philosophy of sense and sensibility was clearly evident in the first hotel G @ Gurney, his exploration for G @ Kelawei is focused on the concept of *flux* – a contemporary mindset and state of living and existence. According to Ko, flux is a condition of the digital world and information society we live in. All the design geometries and patterns consistently reflect this idea of 'flux' in changing and criss-crossing states – the modular wall panels, carpet, facade, and screens throughout the entire building.





**G HOTEL KELAWAI, PENANG**

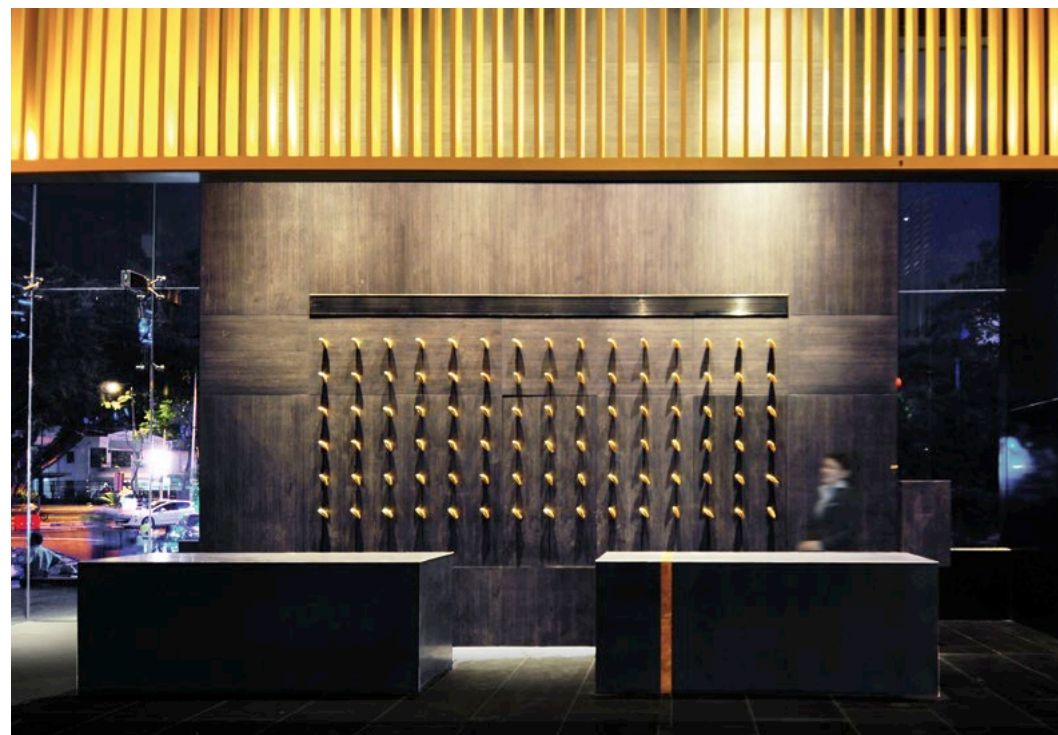
<b>CLIENT</b>	GHOTEL SDN BHD
<b>PROJECT MANAGER</b>	ALTIUM PMC SDN BHD
<b>ARCHITECT</b>	ARCHITECT T Y AU
<b>DESIGN ARCHITECT/INTERIOR DESIGN</b>	K2LD ARCHITECTS
<b>DESIGN TEAM</b>	KO SHIOU HEE, DAVID LEE, KJ PHUA, MELISSA YIE, NING XIAN LIN, OH YORK BIN, MAY RATTANACHAI, CALVIN CHUA
<b>C&amp;S ENGINEER</b>	KNK CONSULT SDN BHD
<b>M&amp;E ENGINEER</b>	JURUTERA PERUNDING VALDUN SDN BHD
<b>COST CONSULTANT</b>	LIMITED EDITION (M) SDN BHD
<b>GRAPHIC DESIGN</b>	DUET DESIGN PTE LTD
<b>LIGHTING CONSULTANT</b>	THE LIGHTBOX PTE LTD
<b>KITCHEN CONSULTANT</b>	AMGLO CONSULT SDN BHD
<b>LANDSCAPE DESIGNER</b>	WATERMOUNT GARDENS PTE LTD



2PM Lounge (the name is derived from the address of the hotel, 2 Persiaran Maktab)



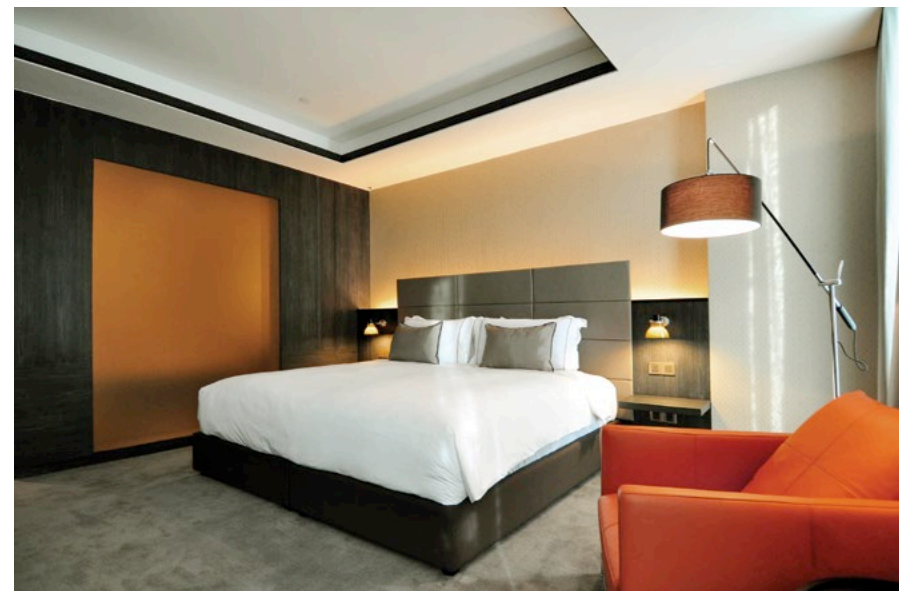
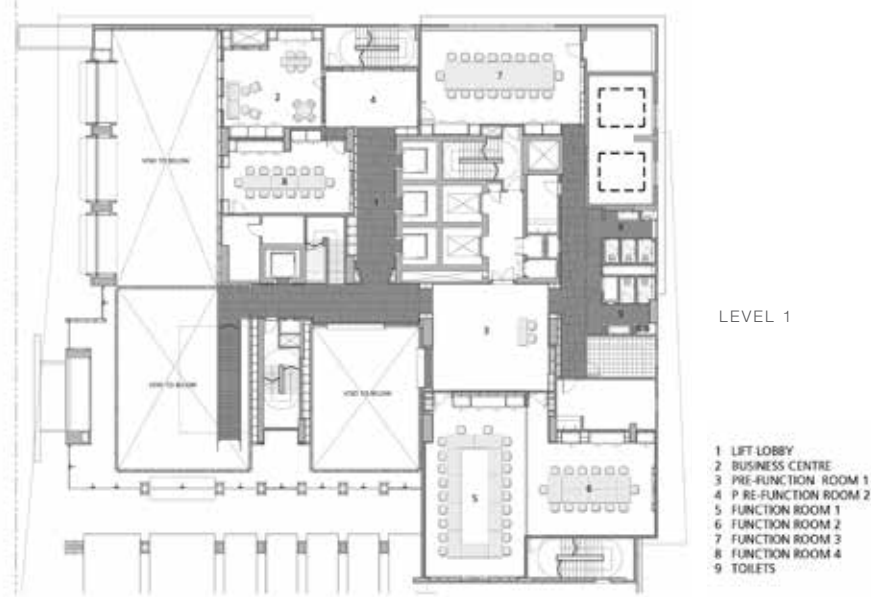
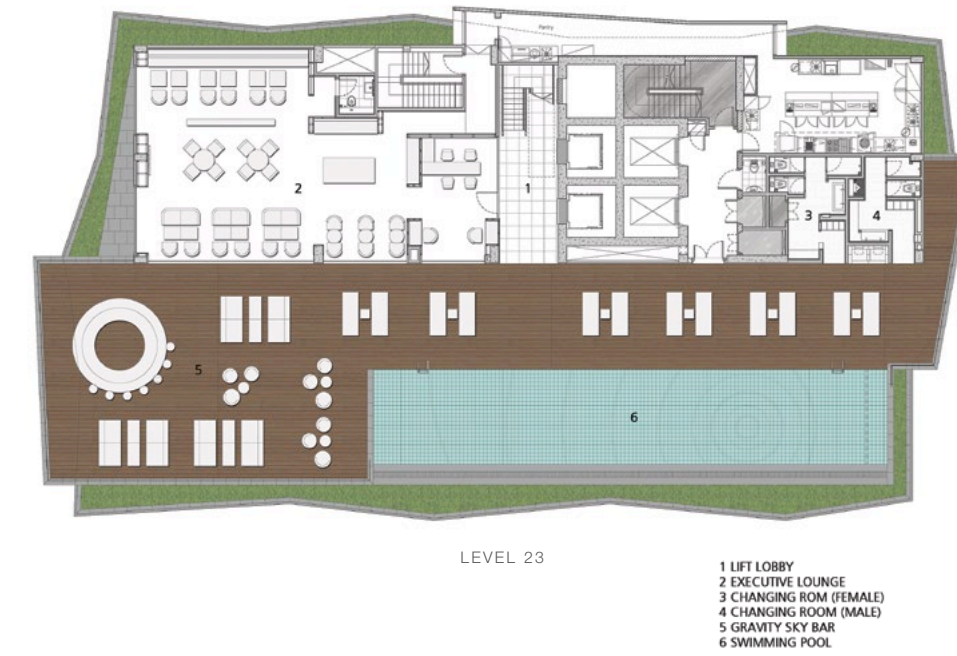
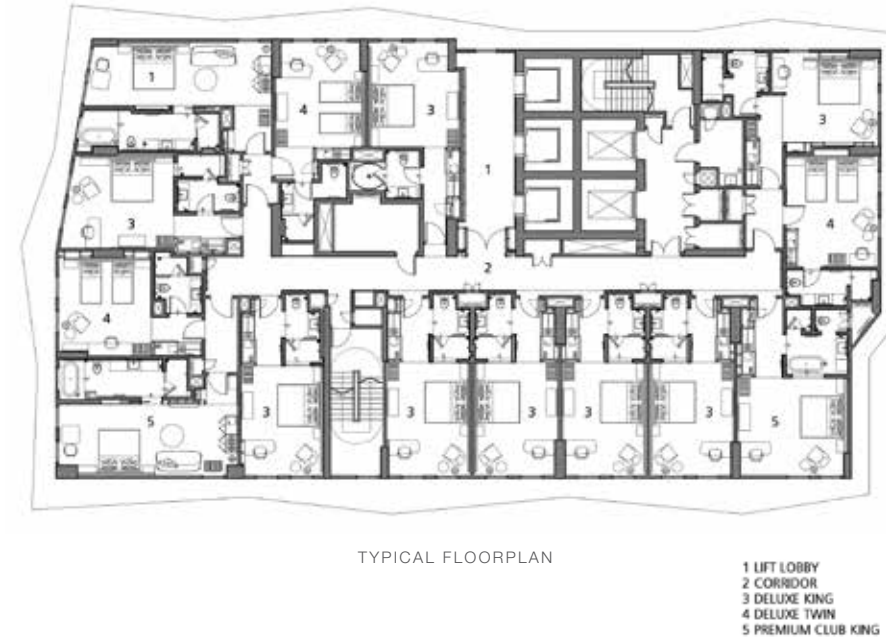
Lobby, reception and concierge



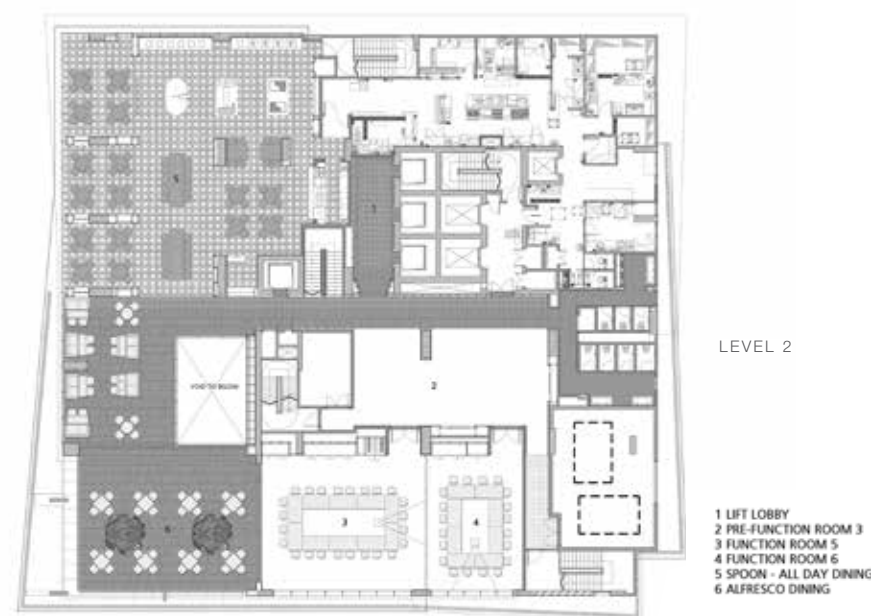
Spoon all-day dining cafe

For the façade, the core idea for the building's distinct look was to create a façade using minimum material, thus helping in reducing material consumption. Only 21% of the surface area is white expanded mesh. As expanded mesh material efficiency is 50%, thus only 10% of the elevation surface area is used to create 100% of the facade language. The repetitive modules of the standard-size double-glazed windows used also reduces production and construction error, besides improving the heat insulation property of the building and lowering the energy consumption.

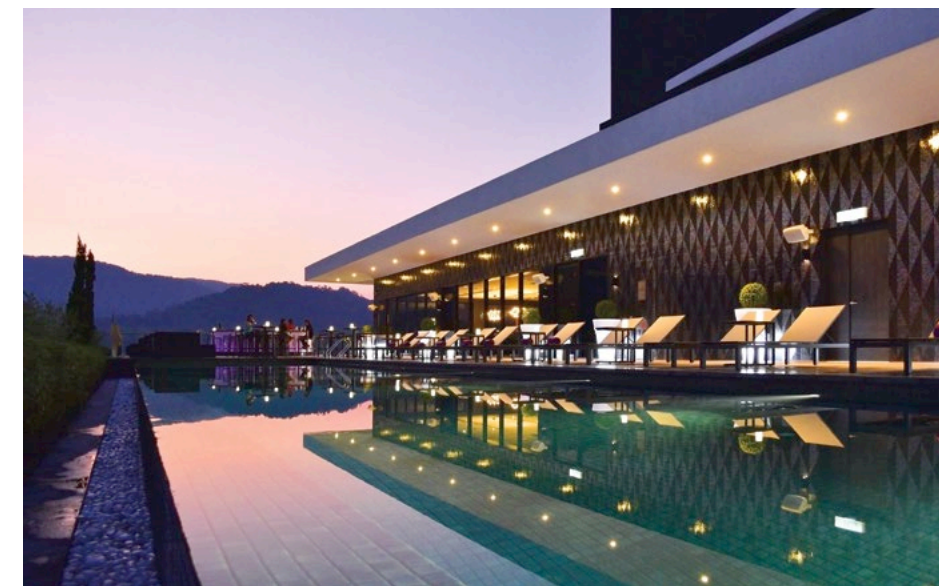
Inside is a photographer's delight! The furniture, soft furnishings through to the signages throughout the entire hotel, have all been carefully thought out and positioned, such that there is a 'frame' at every view or glance. Surprises and visual delight abound in the compact space. The contrast in materials and the carefully composed lighting invite one to touch and feel the elements in the building.



Guestrooms



Executive Lounge



Rooftop pool and Gravity skybar

The lobby is enveloped in a luxurious gold-coloured trellis, akin to a golden bird cage, and is accentuated by soft lighting and dark panelling. In the rooms, lighter shades are chosen for the walls, offset by simple dark panelling and furniture, accentuated by a bright lamp, a carefully selected and positioned table and a Yves Behar Sayl chair made by Herman Miller. The rooms have a cosmopolitan chic feel to them. Bathrooms are lined with selected and matching Venus White marble with light coloured, solid surface counter tops.

In the evening, the building appears like a lantern when its exterior sun screens and vertical white trellises lit up atmospherically. The small compact site is lined with selected foliage, and the outdoor dining at the ground floor is carefully screened off from the road with manicured landscaping. +