

architecturemalaysia

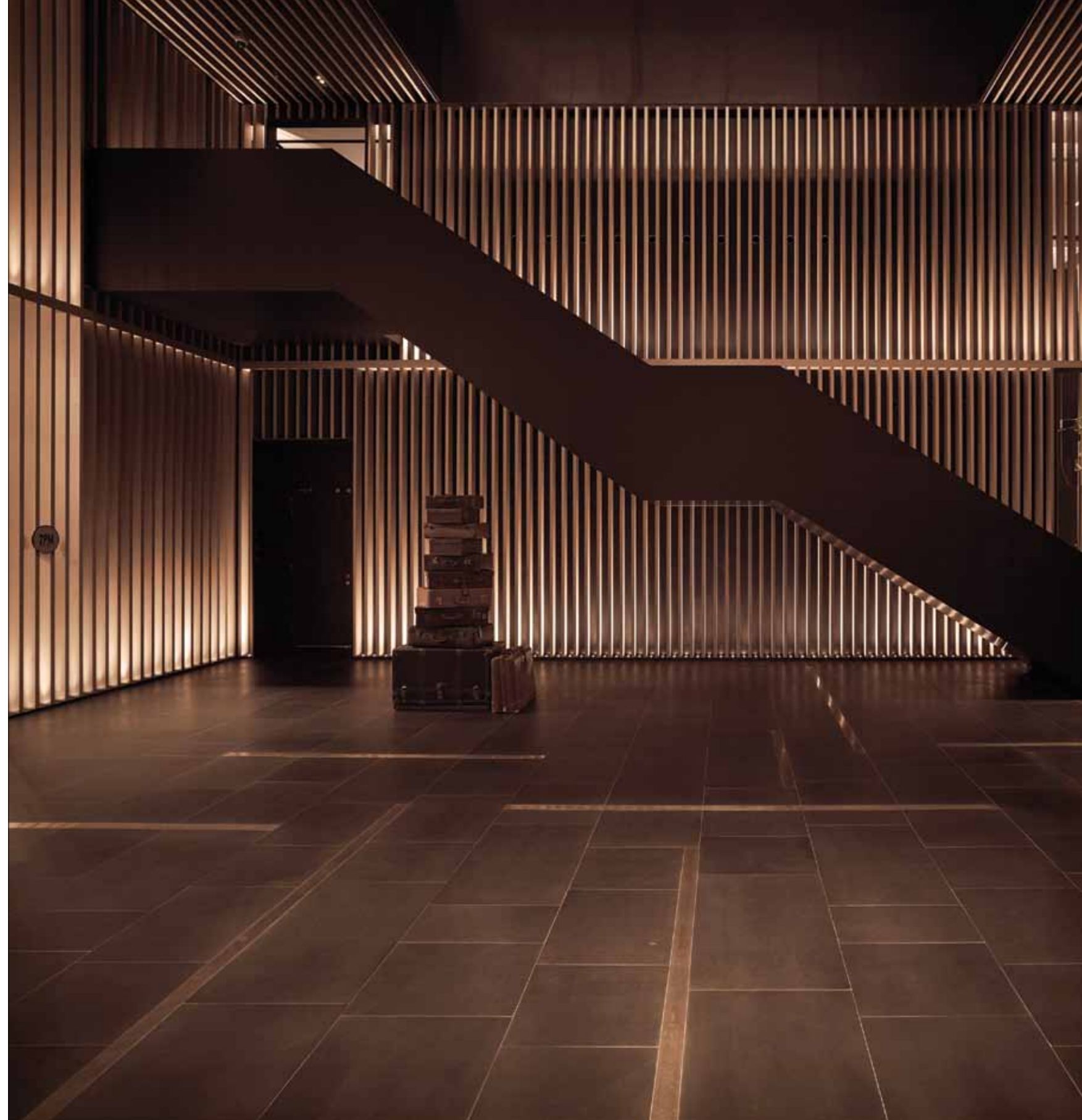
**NU SENTRAL
SUNWAY BRT
PLATINUM SENTRAL
JB SENTRAL
KUCHING SENTRAL**

TRANSIT-
ORIENTED
DEVELOPMENT



G HOTEL KELAWAI

Within the dynamic, tiered facade of the new G Hotel Kelawai is a sleek and elegant hotel that brings a sense of timeless luxury and comfort to anyone who steps in.





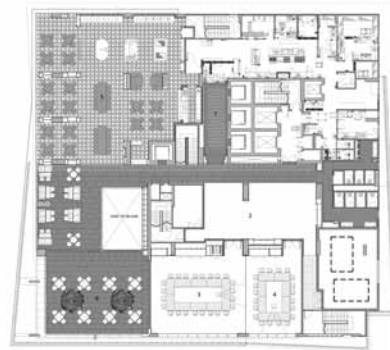
FROM TOP: The entrance and guest drop-off area; The rooftop infinity pool



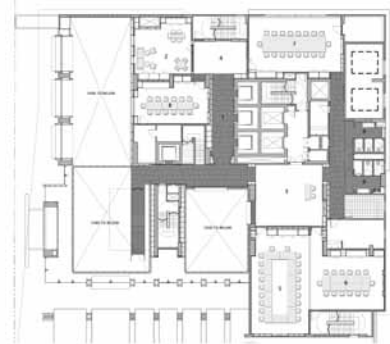
Level 23 plan



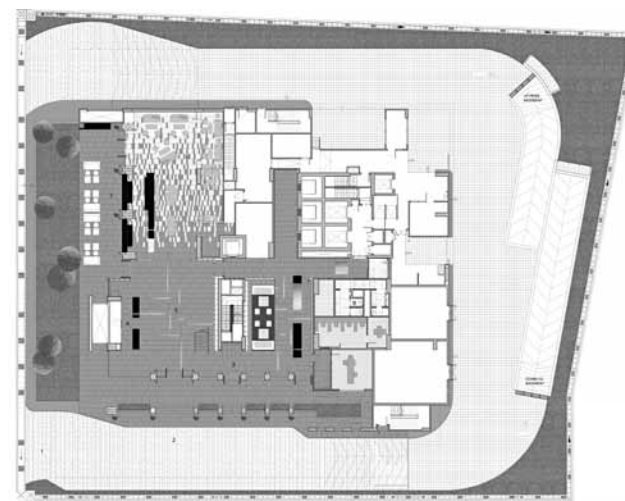
Level 22 plan



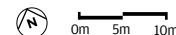
Level 2 plan



Level 1 plan



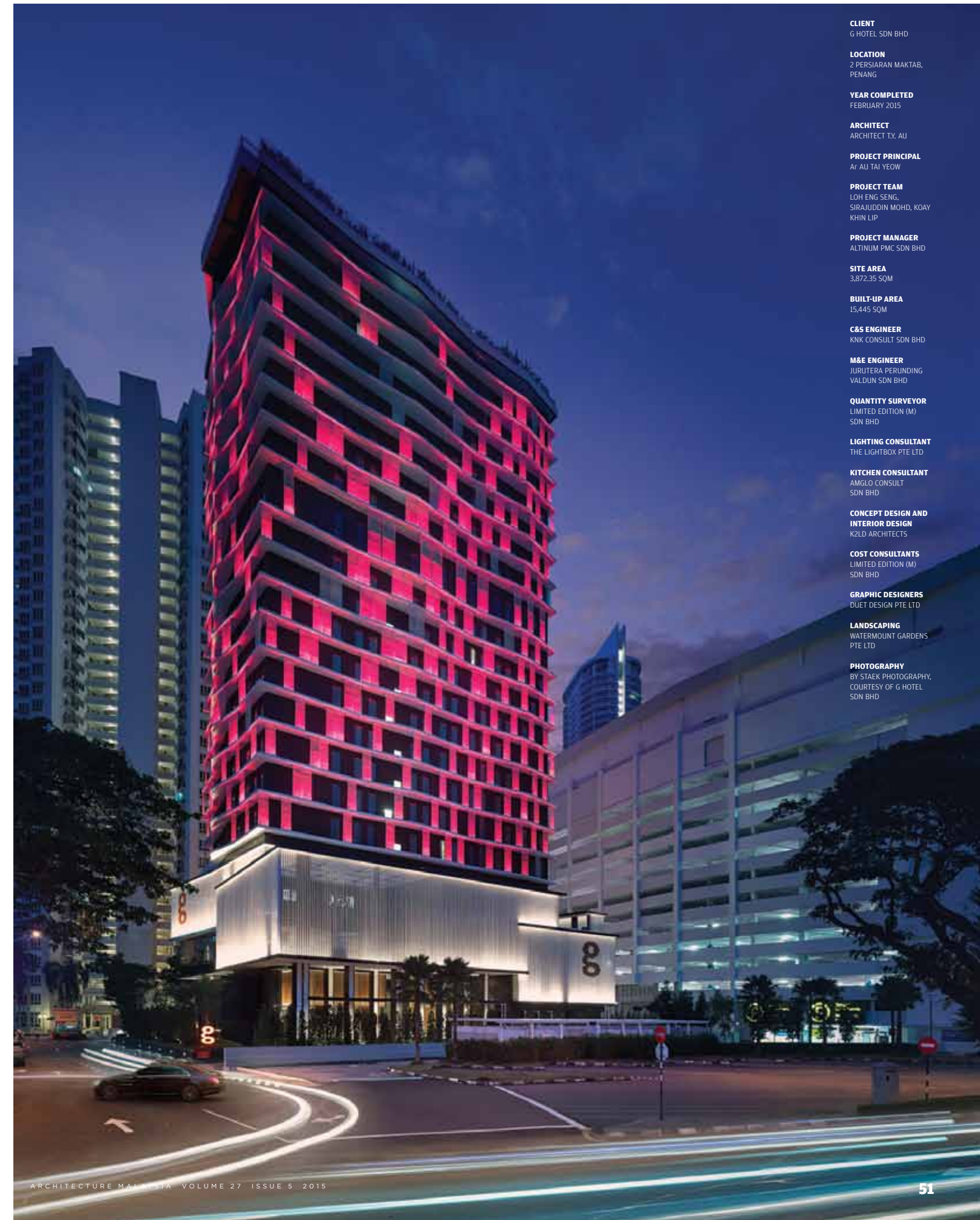
Ground floor plan



It's not very often that a local Penang firm that focuses on housing projects be asked to collaborate with an award-winning designer for a hospitality project. Fortunately for Architect T.Y. Au, Ko Shiou Hee, principal of K2Ld Architects from Singapore, just happened to be a former classmate when they were both studying abroad in America.

Shiou Hee was also responsible for the award-winning G Hotel Gurney, where he

explored his philosophy of Sense and Sensibility in the interiors. This time round, for G Hotel Kelawei, his exploration is on the concept of Flux – a contemporary mindset and state of living and existence. According to Shiou Hee, Flux is a reflection of the digital world and information society we live in. All the design geometries and patterns consistently morph this 'flux' idea in its changing and criss-crossing state – the modular wall panels, carpet, facade and



CLIENT
G HOTEL SDN BHD

LOCATION
2 PERSIARAN MAKTAB,
PENANG

YEAR COMPLETED
FEBRUARY 2015

ARCHITECT
ARCHITECT T.Y. AU

PROJECT PRINCIPAL
AF AU TAI YEOW

PROJECT TEAM
LOH ENG SENG,
SIRAJUDDIN MOHD, KOAY
KHIN LIP

PROJECT MANAGER
ALTIUM PMC SDN BHD

SITE AREA
3,872.35 SQM

BUILT-UP AREA
15,445 SQM

C&S ENGINEER
KNK CONSULT SDN BHD

M&E ENGINEER
JURUTERA PERUNDING
VALDUN SDN BHD

QUANTITY SURVEYOR
LIMITED EDITION (M)
SDN BHD

LIGHTING CONSULTANT
THE LIGHTBOX PTE LTD

KITCHEN CONSULTANT
AMGLO CONSULT
SDN BHD

**CONCEPT DESIGN AND
INTERIOR DESIGN**
K2LD ARCHITECTS

COST CONSULTANTS
LIMITED EDITION (M)
SDN BHD

GRAPHIC DESIGNERS
DUET DESIGN PTE LTD

LANDSCAPING
WATERMOUNT GARDENS
PTE LTD

PHOTOGRAPHY
BY STAEK PHOTOGRAPHY,
COURTESY OF G HOTEL
SDN BHD



FROM TOP: The classy interior of spoon café; meeting room with controlled views of the outdoors

screens throughout the entire building reflect this idea.

For the facade, the core idea of the building's distinct look was to create a facade using minimum material thus helping to reduce material consumption. Only 21% of the surface area is white expanded mesh. As the material efficiency of expanded mesh is 50%, only 10% of the elevation surface area is used to create 100% of the facade language. The repetitive modules of the standard sized double glazed windows used also reduce production and construction error besides improving the heat insulation property of the building and lowering the energy consumption.

G Hotel Kelawai is located at bustling Jalan Kelawai, one of Penang's busiest streets, and also famous for a diverse array of attractions ranging from traditional temples and local eateries to upscale restaurants, boutiques and jewellers. Within mere minutes away is Gurney Drive, home to the congregation of street food chefs, and not forgetting Gurney Plaza and Gurney Paragon – Penang's shopping destination.

In addition to its 208 rooms that are uniquely inspired by innovative design, the hotel houses three trendy and stylish food and beverage outlets – Spoon Café, a coffee house; 2PM, a lobby lounge; and Gravity, a 24th floor rooftop bar.

The lobby is all about style redefined, featuring designer furnishings like Italian-made Baxter Chester Moon Sofa by Paola Navone and Baxter Molly Armchair designed by Dorian and Massimiliano Fuksas. The Chester Moon Sofa features the finest

hand-quilted upholstery in an exclusive capitone pattern. The leather is painstakingly sewn together to create an elegant feature. On the other hand, the Molly Armchair is made of a wooden structure and is covered with leather and fur. The chair's outstretched arm rest looks like it is ready to embrace and comfort after a long day.

A fully equipped 24-hours gymnasium at Level 23 allows the use of state-of-the-art equipment while enjoying the breathtaking view of the green hills. On Level 24, the infinity pool affords a chance to take in a 360° view of the island, including the view of the iconic Penang Bridge, while having a dip. At the same time, at the Gravity rooftop bar, guests can enjoy a night out with drinks to match and views that intoxicate. Spoon Café, reminiscent of a French bistro, is positioned strategically at Level 2 to capture the panoramic mountain top scenery. The lobby lounge, 2PM, is carefully crafted and delicately decorated.

The meeting facilities at Level 1 are flexible – they can cater for small groups such as company meetings and classroom, or be used for separate functions or events organised by different organisations. For large group gatherings, these meeting rooms may be combined into a bigger space to accommodate the crowd.

Unlike other projects where design is approached in a specific stylistic characterisation and shortlived fashion statement, G Hotel Kelawai is free from such sterile minimalist pretensions. The end result is the tagline 'Style... Redefined', that aptly describes the end product. 36



FROM TOP:
Premier suite room;
Premier suite bathroom;
Premier suite living room;
Forum al fresco