

ARCHITECTURE MALAYSIA

am

SARAWAK CULTURAL VILLAGE, CHING LOTUS HUMANIST SPACE,
CHENG HOON TENG TEMPLE, CAMPBELL STREET SHOPHOUSE, KUCHING OLD COURTHOUSE,
ASIAN HERITAGE ROW, BON TON RESORT, THAM KUNG TEMPLE, CARCOSA SERI NEGARA
CONSERVATION | RESTORATION | ADAPTIVE REUSE

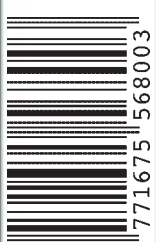
HERITAGE

JM
JOURNAL OF THE MALAYSIAN INSTITUTE OF ARCHITECTS (PERTUBUHAN AKITEK MALAYSIA) | VOLUME 16 ISSUE 1

MYIA RMI5.50 / SING S\$11.00 / OTHER COUNTRIES US\$8.00 | FIRST QUARTER 2004 | MAJALAH AKITEK

16
I
MTA (P) 267/03/2004

ISSN1675-5685 PP2228/1/12/2004



9 771675 568003

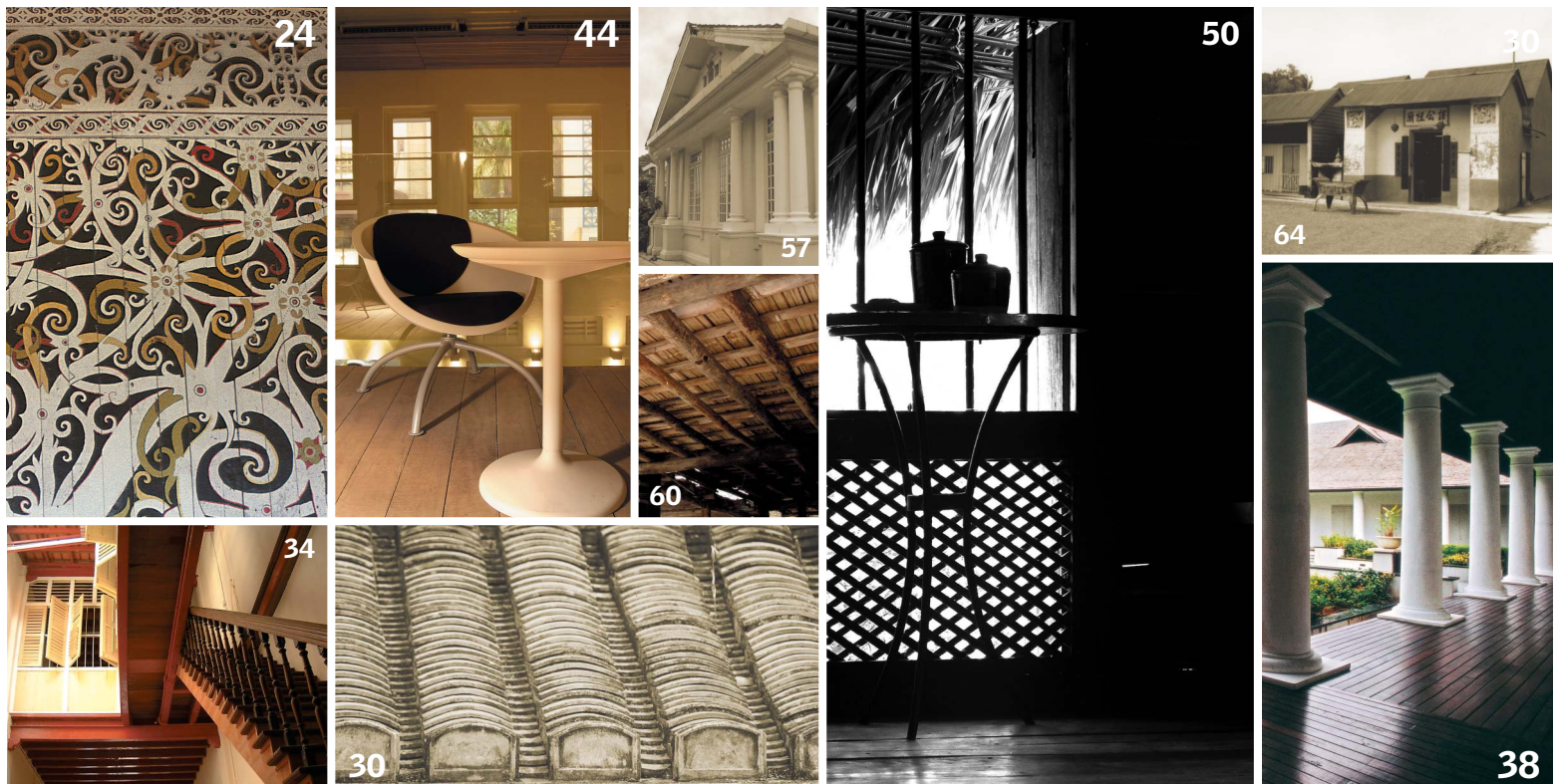
FEATURES	22	The JKR Police Barracks ASSOCIATE PROFESSOR DR MOHAMAD TAJUDDIN HAJI MOHAMAD RASDI
	36	Dialogue With Badan Warisan Malaysia ADELINE LOH
	41	Technical Review Of Cheong Fatt Tze Mansion, Penang AR LAURENCE LOH
	44	Asian Heritage Row, Kuala Lumpur AR NGIOM
	54	Heritage Issues In Johor AR HAMDAN ABDUL JAMAL
	60	The Tambunan Bamboo House, Sabah RICHARD NELSON SOKIAL
	63	Conservation Of Shophouses DR HASANUDDIN LAMIT
	66	Interview With KALAM AR YAP YEW PENG

PROJECTS	24	New Buildings At Sarawak Cultural Village EDRIC ONG ARCHITECT
	27	Ching Lotus Humanist Space, Penang TAN YEOW WOUI CULTURE & HERITAGE STUDIO
	30	Cheng Hoon Teng Temple, Malacca LAURENCE LOH AKITEK
	34	Shophouse On Campbell Street, Penang ARCHITECT TY. AU
	38	Kuching Old Courthouse, Sarawak ARKITEK JFN SDN BHD
	50	Bon Ton Resort, Langkawi NARELLE MCMURTRIE
	57	Carcosa Seri Negara, Kuala Lumpur BEP AKITEK SDN BHD
	64	Tham Kung Temple, Sabah PC CHARTERED ARCHITECT

REGULARS	17	EDITORIAL
	18	INCOMING
	19	ESSAY – The Dilapidation Survey Report
	68	IT – Architects And The Information Economy
	69	BOOKS
	70	PRODUCT WATCH

Contents

HERITAGE FIRST QUARTER 2004



Shophouse on Campbell Street

ARCHITECT ARCHITECT T.Y. AU

(ARCHITECT'S STATEMENT)

» The shophouse is usually constructed in two storeys: the ground floor dedicated for business while the first floor for residential purposes. Historically, shophouses provide the possibility for a combination of high population density and intensity of economic activity in a city [David G. Kohl's *Chinese Architecture In The Straits Settlements And Western Malaya: Temples, Kongsis And Houses*]. Shophouses are elongated, and completely take up the whole site – except when a covered loggia exists at the street level.

Campbell Street, a famed pedestrian shopping street in Penang, is lined on both sides by two- and three-storey shophouses. No. 24 Campbell Street is part of a series of four unique two-and-a-half-storey shophouses located at the end of this street. The buildings were originally constructed and

completed in 1910 for individual owner Lam Cheok Tong, but over the years, ownership of the buildings has changed. From documents that we managed to salvage, we discovered that the very first building plans were submitted on 24 Dec 1909 by Mr. James Stark who listed himself as both civil engineer and architect for the project.

No. 24 was in a dilapidated condition when we found it: floorboards missing; roof tiles cracked; and the staircase timber had rotted away. We were asked to provide suggestions for its repair, within a tight budget. Working with a dedicated construction team, the building was slowly restored.

We changed the corrugated bituminous roofing to terracotta tile roof, and replaced the floorboards with natural hardwood timber. The missing ornate balusters of the

staircase were also replaced to match the original. Historically, a typical shophouse has an air-well open to the sky which provides an unlimited supply of air and light. We wanted to retain the air-well and allow natural ventilation to pass through the house. In order to prevent rain from making the ground floor space unusable, a clear polycarbonate operable roof was designed and constructed.

Skilled craftsmen were engaged to make new windows to match and complement the existing louvred windows surrounding the air-well. The first floor façade is divided into three equally sized windows with segmental arches as well as Palladian-inspired ornamentation. Clear Perspex sheets sealed small round vents interspersed between the windows, in order to prepare for air-conditioning usage. The louvred shutters at the first floor



- 1 Shophouse prior to conservation
- 2 View of the staircase from ground floor
- 3 Shophouse prior to conservation
- 4 View of the second floor door and windows to the balcony
- 5 View of the central courtyard windows

LOCATION
24 Campbell Street, Penang

PRINCIPAL
T Y Au

PROJECT TEAM
Sirajuddin Mohamad, Cheng Le Jin

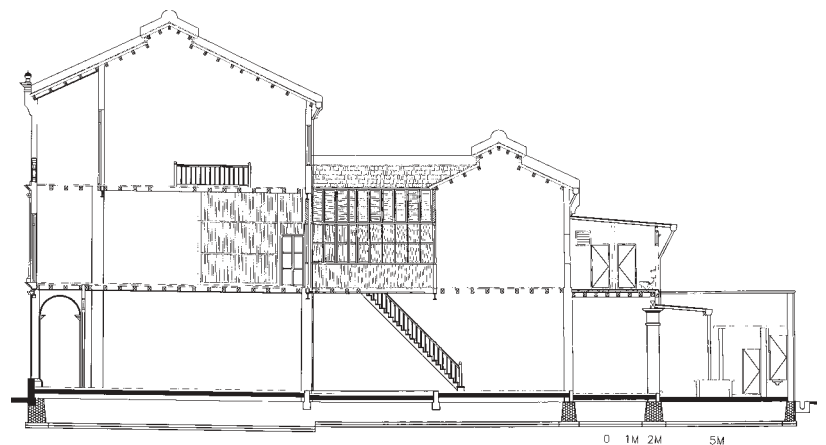
CONTRACTOR
Hockim Construction Sdn Bhd

open to reveal timber railings. On the second floor, the building is set back with a generous balcony. We opted to replace the ceiling at the balcony with timber planks painted in a dark rich hue.

We had an understanding client sensitive to the conservation of heritage houses. As such, from the photographs, one can see the transformation made to the ground floor. The collapsible steel grille doors utilized at the ground floor were replaced with a façade that blended with the entire building. Old-type timber windows were sourced, cleaned and stained in a dark timber colour. Decorative heritage tiles were then applied together with modern ceramic tiles at the base of the windows. The final pieces to the new ground floor façade are a pair of antique timber wooden doors fitted with brass knockers. 



FRONT ELEVATION



SECTION



4



5